

SP-X Sandwich Sealing Machine

The SPX series machine requires the product to be placed either automatically or manually into the product bucket conveyor, which then passed through the machine. The product box passes into the machine and an overhead rotary tucker ploughs the top minor flaps. Glue is then applied to the top flap, which is sealed using a dual roller system; the top flap is then sealed to the box. The carton is rotated through 90° and the side flaps are subsequently sealed to the box. The product is then discharged from the machine using a belt carrier system ready for collection.

- Designed for a three shift operation
- Heavy welded st/steel frame
- Stainless steel shafts and guides
- Completely guarded by easily removable fixed guards and hinged see-through electrically interlocked top guards allowing a full clear view of the machine operation.
- Complies with BS5304
- Robust transmission chains with high quality carton lugs.
- Overload protection on machine drive and all mechanisms.
- Hot melt jet applicator
- Extensive use of heavy duty timing belts with duplex main drive chain
- Driven carton discharge belts
- All adjusting points fitted with hand wheels, digital readouts, quick release handles and calibrated scales.
- Low level noise – less than 80db (A)
- Level infeed bucket conveyor for ease of loading
- MMI touch screen control

OPTIONAL EXTRAS

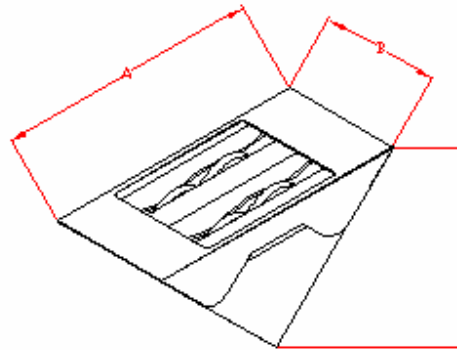
- Emboss coding
- Ink Coding
- Stainless steel guards
- Cold gluing
- Barcode scanning
- Laser coding

PRODUCT TRANSFER SYSTEMS:-

JWP offers a comprehensive range of standard product transfer systems for most types of product. See separate broucher for details

CARTON SIZE RANGE

- A - 160 – 200mm
- B - 50 – 120mm
- C - 80 – 100mm



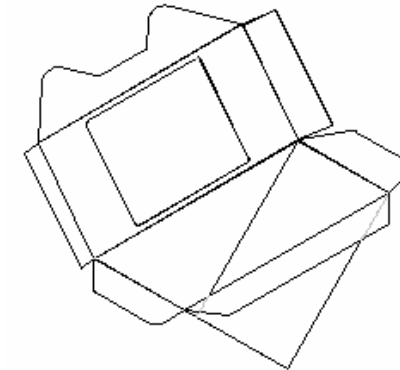
Technical Data

Output :-
Variable up to 200 Cartons/min

Carton closure:-
Hot melt (jet gluing)

Electrical:-
0.75kW, AC motor with inverter giving variable speed.
PLC Control and electronic cam box.
24V control circuit
3kW single phase for hot melt applicator.

Carton Flight Pitch:-
Std options 7.5" 10" 15" pitch between buckets



Jacob White (Packaging) Ltd
Riverside Industrial Estate
Dartford, Kent DA1 5BY
United Kingdom

Tel: 01322 272 531
Fax: 01322 270 692

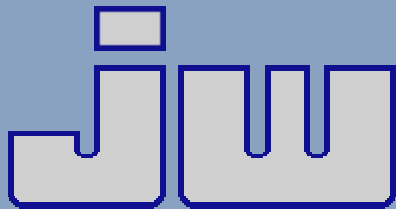
Jacob White Automation & System Resources
Suite 306, Amberland Plaza,
J Vargas Ave, Ortigas Centre, Pasig,
Metro Manila
Philippines

Tel: (632) 634 5482
Fax: (632) 634 0318

13035 Olive Boulevard
Suite 119
St Louis
Missouri 63141 – 6178

Tel: 00 1 314 291 6448
Fax: 00 1 314 291 6913

AVV Industrial
Packaging machines
& Product handling
Pauvreweg 29
4879 NJ Etten-Leur
The Netherlands
Tel: +31 765040695
Fax: +31 765040696



SP-X Automatic Sandwich Carton Sealer

